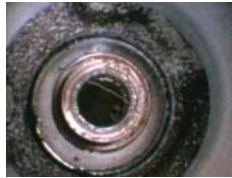


# BoresEye Videoscope Systems



With a BoresEye Videoscope, there is no need to drag your out-dated and cumbersome borescope system to a difficult to access or confined work area. The BoresEye System performs all the functions of a traditional industrial borescope or fiberscope. The palm-sized BoresEye Videoscope aids mobility, is equipped with an LED light source, TFT display, micro-camera and digital recorder.

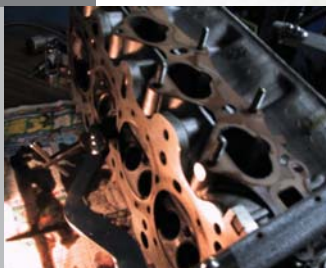


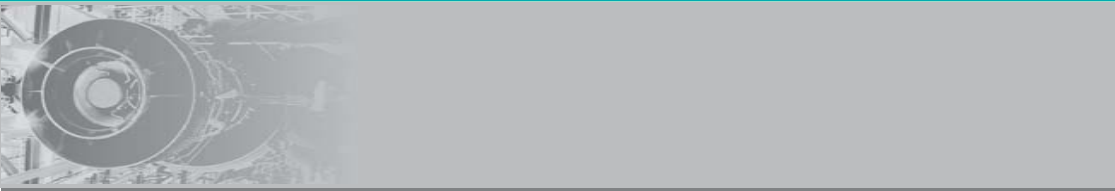
The BoresEye System is both technically and economically revolutionary

**5.5 mm**



Especially designed for the quality control and maintenance markets, the BoresEye system offers a totally different working experience. Use the integral TFT display or connect the image output to a remote monitor or TV - improve communication with customers and plant team members.





### 5.5mm outside diameter

5.5mm OD probe can be easily inserted through most openings.  
An extra-wide angle camera takes high resolution 640X480 pictures.

### 4 superstrength white light LEDs

With 4 high-brightness LED light sources (0~275Lux/4cm),  
every detail of your target can be illuminated.

### Oil and scratch resistant

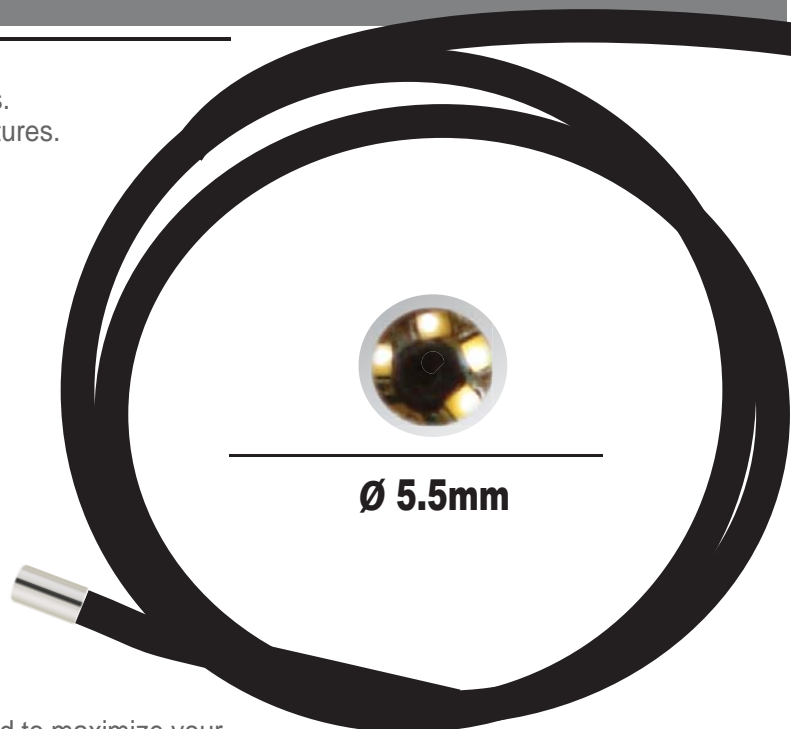
Oil and scratch-resistant tempered glass not only protects the  
camera, but also maintains the high image resolution.

### Optimize illuminant design

The optimized illuminant design can highligh most cracks and  
burn marks on highly reflective surfaces.

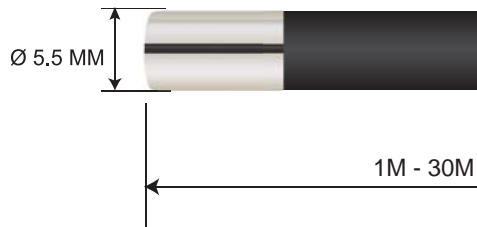
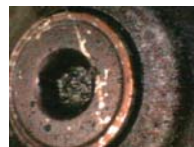
### Replace probe/camera assembly in the field

You can easily install different probe assemblies right in the field to maximize your  
inspection time -1M, 2M, 3M, 10M, 20M and 30M lengths- easily and rapidly.

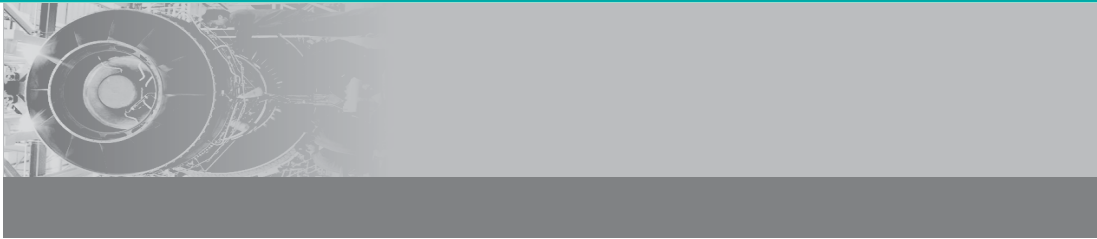


### Real screen shots

Note minimal  
image loss



Which image gives you the results you need, the traditional industrial borescope image on the left  
with its 'peep-hole' image...or the BoreEye Videoscope's full image on the right - the choice is obvious!



### Stepless illumination adjustment

Easy to use operating system designed for professionals. You can now finish all tasks quickly and efficiently. In addition, the skidproof, antishock, ergonomics design allows greater mobility and enhanced images.



3.5 " Extra-wide and clear TFT monitor



Photograph and record rapidly

You can photograph and record rapidly and accurately, even with your gloves on!



USB jack

SD card slot



The video output (TV Out) function can transfer video images to a remote monitor or TV, to facilitate discussion and communication.

You can perform all tasks with easy to operate multi-function keys.



Video output AC jack



Multifunction key

## FEATURE

### Professional videoscope

A professional videoscope designed for professionals. You can operate this system accurately and rapidly with your gloves on!

### Portable product

You can probe with palm-sized BoreEye anytime, anywhere. There's no longer any need for dragging around that "luggage-sized" borescope.

### Operates up to 4 hrs on a single charge

Equipped with a high capacity battery. BoreEye can work and record for up to 4 hours continuously after being charged for 2 hrs. The 512MB memory card can also hold 14,000 photos. You can manage and mail these photos as a working report on your desktop PC after they're transferred through a USB cable.

### 3.5" Extra-wide view angle TFT

3.5 " Extra-wide view angle and clear TFT, protected by oil and scratch resistant tempered glass

**\*\* Configured and Serviced in The United States \*\***



### Insertion Tube & Light Source Specification

Image Sensor	CMOS Image Sensor
Resolution (Dynamic / Static)	320(H)*240(V) / 640(H)*480(V)
Size	
Tip (Insertion Tube ) Diameter	5.5mm
Insertion Tube Length	1M~30M
Frame rate	~30 fps
S/N Ratio	42dB
Exposure	Automatic
White balance	Fix
Field of View (FOV)	67°
Depth of Field (DOF)	1.5cm~10cm
Light Source	4 White LED



### System Specification

Power	100-220VAC to 5.5 Volt DC
Display	3.5" TFT LCD Monitor 320*240 Pixels
Interface	Mini usb 1.1/ AV out / AV in/
Battery	Rechargeable Li-Polymer Battery (3.7V)
Video Out Format	NTSC & PAL
Recording medium	SD card (512 Mb, upgradeable to 2G)
Compression Format	MPEG4
Still Image Storage Format	JPEG (640 x 480)
Video Recording Format	ASF (320 x 240)
Language	English (French or Spanish available in future)

#### \* Basic Kit includes:

- 1 x 3.5" TFT Monitor
  - 1 x 100-220V ULc charger
  - 1 x NTSC / PAL output cable
  - 1 x 512 Mb SD Card
  - 1 x 1.8M USB cable,
  - 1 x operator's manual
  - 1 x custom storage case
- ADD  
probe(s) and accessories  
as required

### Function

Quick Snap
Quick Video Recording
Quick Review
AV Out
Video\Picture Viewer

### Ordering Information

Available BoresEye Kits*:	Optional Accessories:
BoresEye-2010*	- PN 6M35 35 deg screw-on mirror
Available 2010 Probes (in Meters):	- PN 6M45 45 deg screw-on mirror
1M, 2M, 3M, 5M,	- PN 6M60 60 deg screw-on mirror
10M, 20M & 30M	- PN MG magnetic tip attachment
	- PN MJ protective jacket

**CONFIGURED AND SERVICED IN U.S.A. - AVAILABLE THROUGH AUTHORIZED DANATRONICS DISTRIBUTORS ACROSS U.S.A., CANADA AND AROUND THE WORLD**

BoresEye 2020 Series:

